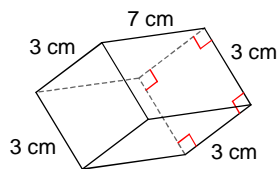


POVRCH HRANOLA - B

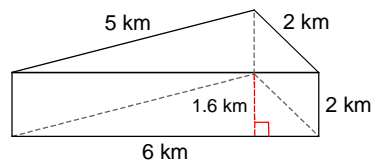
Aký je povrch hranola?

1)



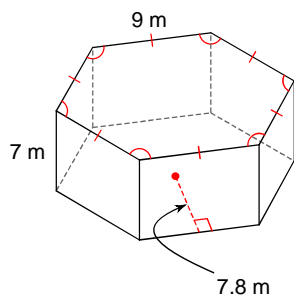
- A) 138 cm^2 B) 93 cm^2
 C) 102 cm^2 D) 92 cm^2

2)



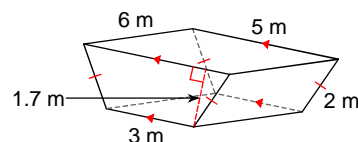
- A) 35.6 km^2 B) 42.9 km^2
 C) 28.1 km^2 D) 30.8 km^2

3)



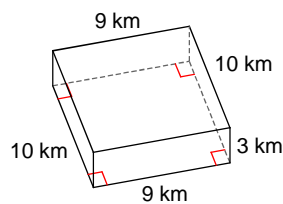
- A) 448.2 m^2 B) 588.6 m^2
 C) 799.2 m^2 D) 687.3 m^2

4)



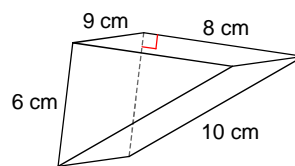
- A) 103.9 m^2 B) 53.7 m^2
 C) 78.8 m^2 D) 85.6 m^2

5)



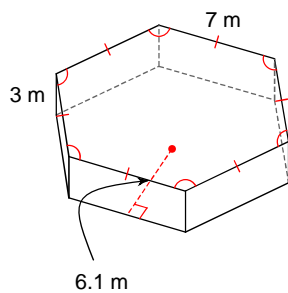
- A) 151 km^2 B) 187 km^2
 C) 294 km^2 D) 204 km^2

6)



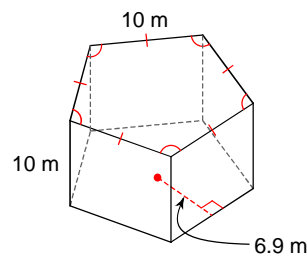
- A) 303 cm^2 B) 268 cm^2
 C) 264 cm^2 D) 240 cm^2

7)



- A) 168.7 m^2 B) 382.2 m^2
 C) 147.35 m^2 D) 254.1 m^2

8)



- A) 672.5 m^2 B) 845 m^2
 C) 815 m^2 D) 569 m^2

VÝSLEDKY - POVRCH HRANOLA - B



1) C
5) C

2) A
6) C

3) C
7) B

4) D
8) B